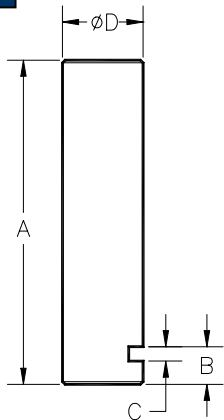


Double Flange Wheels



Model		A	B	C	D (Tread Dia.)	F	G (Pitch Dia.)	H	J (Axle Dia.)	K	N	W	No of Teeth	Gear Module	No of Brgs.	Max Wheel Load
DF120	mm	76	147	62	120	92	156	38	30	11	162	54	52	3	2	1836 kg
	in	2.99	5.79	2.44	4.72	3.62	6.14	1.50	1.18	0.43	6.38	2.13	52	3	2	4048 lbs
DF120B	mm	76	147	62	120	92	156	38	30	11	162	54	52	3	3	2932 kg
	in	2.99	5.79	2.44	4.72	3.62	6.14	1.50	1.18	0.43	6.38	2.13	52	3	3	6465 lbs
DF200	mm	84	229	85	200	103	247	42	45	14	252	57	82	3	2	3280 kg
	in	3.31	9.02	3.35	7.87	4.06	9.72	1.65	1.77	0.55	9.92	2.24	82	3	2	7232 lbs
DF200B	mm	84	229	85	200	103	247	42	45	14	252	57	82	3	3	5767 kg
	in	3.31	9.02	3.35	7.87	4.06	9.72	1.65	1.77	0.55	9.92	2.24	82	3	3	12716 lbs
DF320	mm	103	346	120	320	135	387	52	55	17	393	70	129	3	2	6850 kg
	in	4.06	13.62	4.72	12.60	5.31	15.24	2.05	2.17	0.67	15.47	2.76	129	3	2	15104 lbs
DF320B	mm	103	346	120	320	135	387	52	55	17	393	70	129	3	3	10420 kg
	in	4.06	13.62	4.72	12.60	5.31	15.24	2.05	2.17	0.67	15.47	2.76	129	3	3	22976 lbs
DF500	mm	130	550	150	500	170	552	65	70	18	560	90	138	4	3	14822 kg
	in	5.12	21.65	5.91	19.69	6.69	21.73	2.56	2.76	0.71	22.05	3.54	138	4	3	32683 lbs

Axles for Double Flange Wheels



Model		A	B	C	D (Axle Dia.)
DFA30	mm	152	14	8	30
	in	5.98	0.55	0.31	1.18
DFA45	mm	181	14	8	45
	in	7.13	0.55	0.31	1.77
DFA55	mm	232	14	8	55
	in	9.13	0.55	0.31	2.17
DFA70	mm	292	17	10	70
	in	11.50	0.67	0.39	2.76

Larger capacity wheels upon request

Wheel material: Ductile Iron ASTM A536-80; Grade 80-55-06

All dimensions subject to change without notice