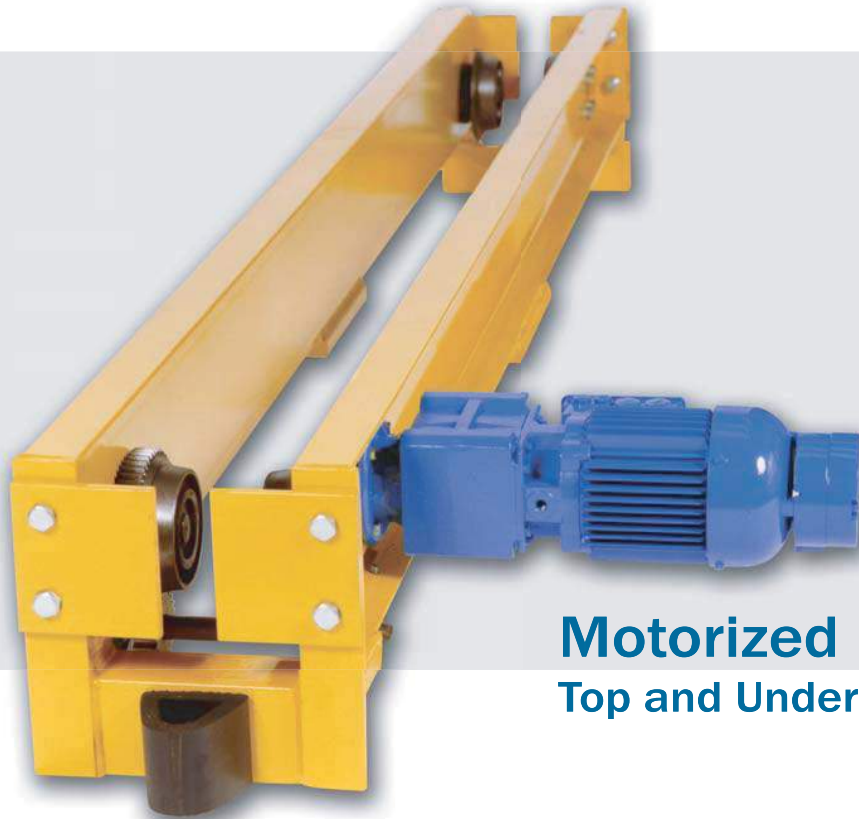




# Hydramach Overhead Crane

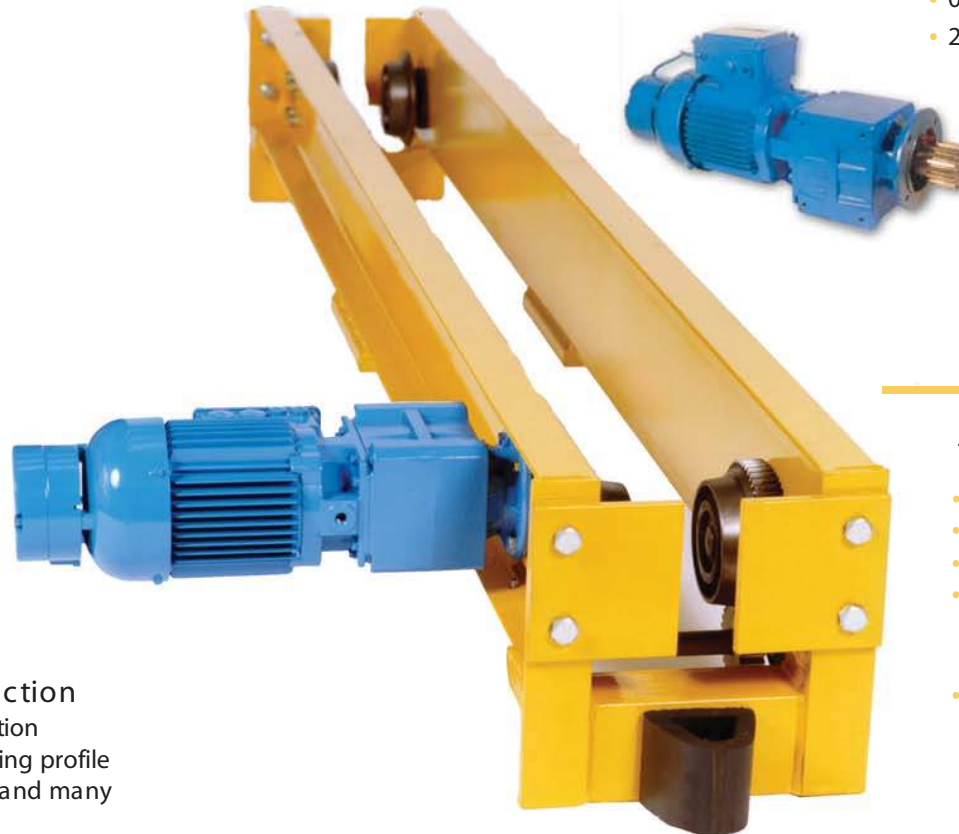
crane technology



**Motorized End Trucks**  
Top and Under Running

### Anti-Drop Plates & Rubber Stop

- Anti-drop plates increase safety coefficient of work
- Standard shock absorbing rubber end stops



### Gear Motor

- Single & dual speeds
- Flange or foot mounted gearboxes
- IP 65 protection
- Spring setting disc brakes
- Totally enclosed and dust tight
- 3 phase 0.075 - 100 HP
- 0.15 - 500 RPM
- 230, 460 & 575V @ 60Hz

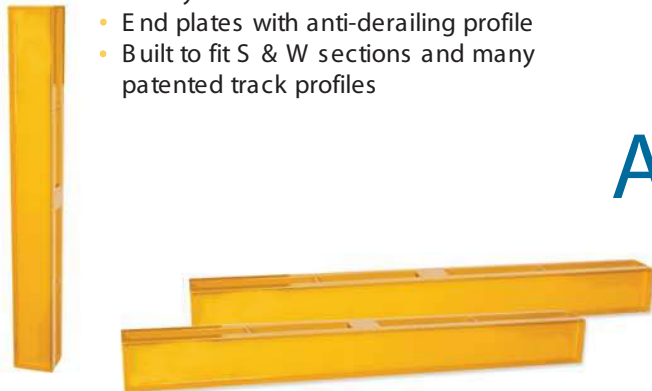
### Travel Wheels

- Single & double flanged wheels
- Plain or precision geared
- High strength ductile iron castings
- Machined at a NC machining center to ensure consistent and accurate tolerances
- Deep grooved, shielded ball bearings



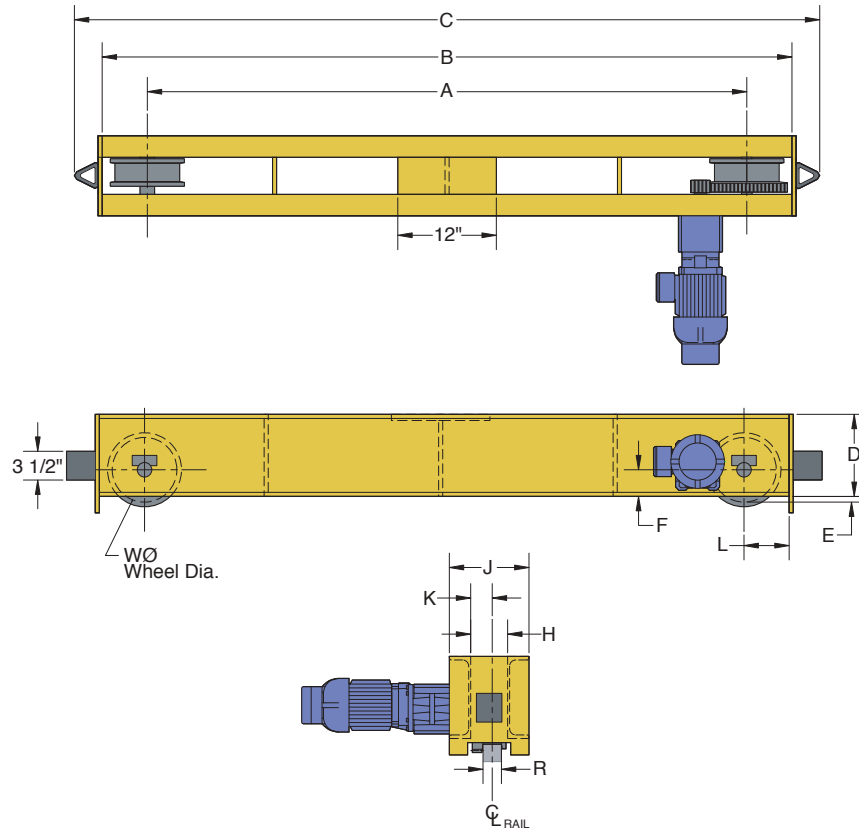
### Steel Frame Construction

- Heavy C-Channel construction
- End plates with anti-derailing profile
- Built to fit S & W sections and many patented track profiles



# Anatomy of a Motorized end truck

## Top Running Motorized End Trucks

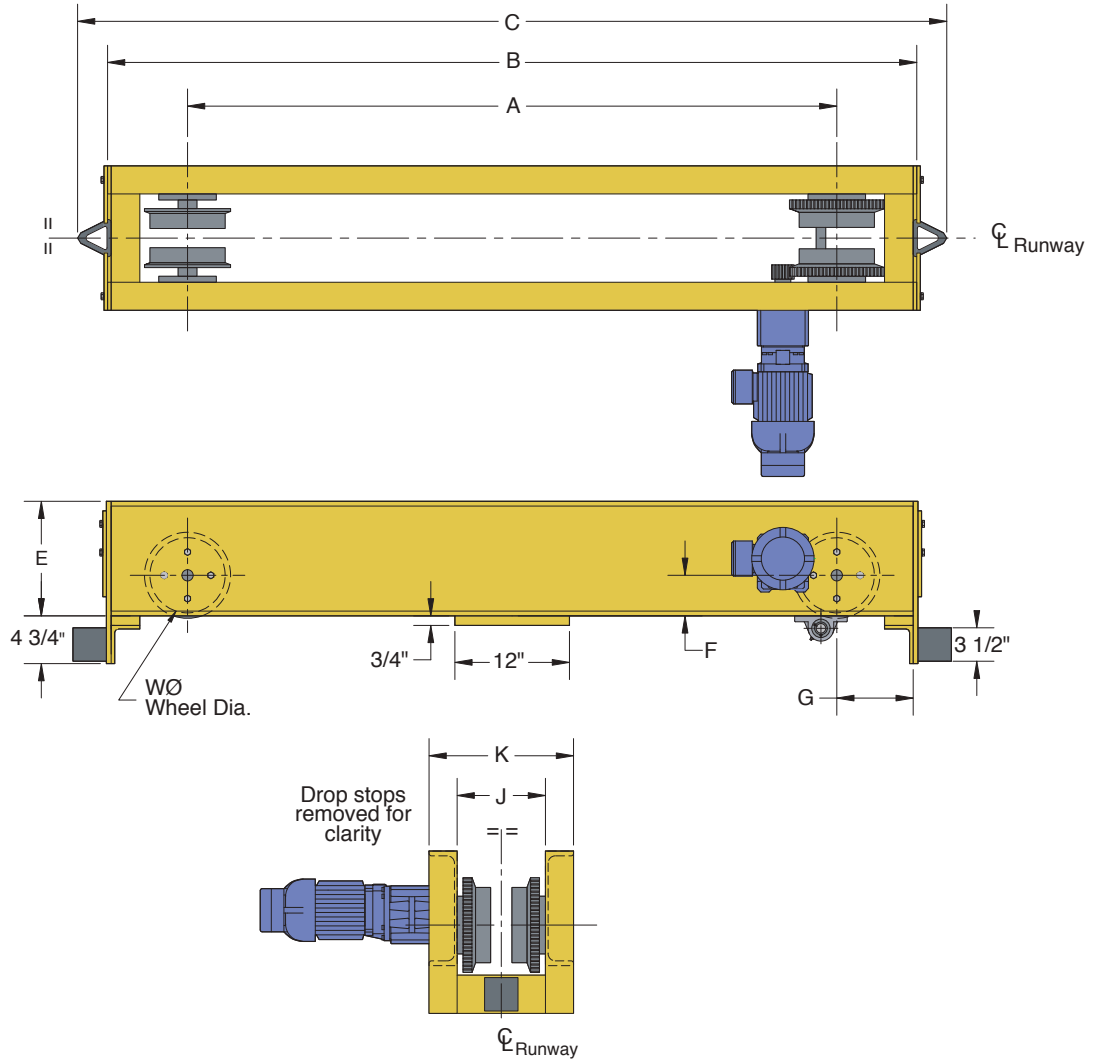


Top Running Motorized End Truck Dimensional Data

Capacity (tons)	Span	A	B	C	D (inches)	E (inches)	F (inches)	H (inches)	J (inches)	K (inches)	L (inches)	R (inches)	W (inches)	Weight (lbs)
2	<30'	5'-0"	6'-8"	6'-4"	8	0.500	1.875	4.0	8.500	2.313	0'-4"	2.125	4.750	510
	30'-40'	6'-0"	6'-8"	7'-4"	8	0.500	1.875	4.0	8.500	2.313	0'-4"	2.125	4.750	530
	40'-50'	7'-0"	7'-8"	8'-4"	8	0.500	1.875	4.0	8.500	2.313	0'-4"	2.125	4.750	545
	50'-60'	10'-0"	10'-8"	11'-4"	8	0.500	1.875	4.0	8.500	2.313	0'-4"	2.125	4.750	696
3	<30'	5'-0"	6'-8"	6'-4"	8	0.500	1.875	4.0	8.500	2.313	0'-4"	2.125	4.750	601
	30'-40'	6'-0"	6'-8"	7'-4"	8	0.500	1.875	4.0	8.500	2.313	0'-4"	2.125	4.750	636
	40'-50'	7'-0"	7'-8"	8'-4"	8	0.500	1.875	4.0	8.500	2.313	0'-4"	2.125	4.750	640
	50'-60'	10'-0"	11'-0"	11'-8"	10	0.688	3.250	4.5	9.688	2.625	0'-6"	2.250	7.875	1098
5	<30'	5'-0"	5'-8"	6'-4"	8	0.500	1.875	4.0	8.500	2.313	0'-4"	2.125	4.750	568
	30'-40'	6'-0"	7'-0"	7'-8"	10	0.688	3.250	4.5	9.688	2.625	0'-6"	2.250	7.875	918
	40'-50'	7'-0"	8'-0"	8'-8"	10	0.688	3.250	4.5	9.688	2.625	0'-6"	2.250	7.875	981
	50'-60'	10'-0"	11'-0"	11'-8"	10	0.688	3.250	4.5	9.688	2.625	0'-6"	2.250	7.875	1103
7.5	<30'	5'-0"	6'-0"	6'-8"	10	0.688	3.250	4.5	9.688	2.625	0'-6"	2.250	7.875	857
	30'-40'	6'-0"	7'-0"	7'-8"	10	0.688	3.250	4.5	9.688	2.625	0'-6"	2.250	7.875	920
	40'-50'	7'-0"	8'-0"	8'-8"	10	0.688	3.250	4.5	9.688	2.625	0'-6"	2.250	7.875	991
	50'-60'	10'-0"	11'-6"	12'-2"	12	0.688	5.250	6.0	11.875	3.688	0'-9"	2.750	12.625	1937
10	<30'	5'-0"	6'-0"	6'-8"	10	0.688	3.250	4.5	9.688	2.625	0'-6"	2.250	7.875	865
	30'-40'	6'-0"	7'-0"	7'-8"	10	0.688	3.250	4.5	9.688	2.625	0'-6"	2.250	7.875	930
	40'-50'	7'-0"	8'-0"	8'-8"	10	0.688	3.250	4.5	9.688	2.625	0'-6"	2.250	7.875	998
	50'-60'	10'-0"	11'-6"	12'-2"	12	1.063	5.250	6.0	11.875	3.688	0'-9"	2.750	12.625	1937
15	<30'	5'-0"	6'-6"	7'-2"	12	1.063	5.250	6.0	11.875	3.688	0'-9"	2.750	12.625	1621
	30'-40'	6'-0"	7'-6"	8'-2"	12	1.063	5.250	6.0	11.875	3.688	0'-9"	2.750	12.625	1781
	40'-50'	7'-0"	9'-0"	9'-8"	15	2.313	7.500	8.0	14.813	4.813	1'-0"	3.125	19.688	3033
	50'-60'	10'-0"	12'-0"	12'-8"	15	2.313	7.500	8.0	14.813	4.813	1'-0"	3.125	19.688	3303

\*All dimensions are subject to change without notice

## Under Running Motorized End Trucks



Under Running Motorized End Truck Dimensional Data

Capacity (tons)	Span	A	B	C	D (inches)	E (inches)	F (inches)	G (inches)	J	K	Weight (lbs)
<b>2</b>	<40'	5'-0"	6'-0"	6'-8"	5.125	8	3.000	6	Width of Runway Flange Plus 3.25"	J+4.500"	500
	40'-50'	7'-0"	8'-0"	8'-8"	5.125	8	3.000	6		J+4.500"	570
	50'-60'	10'-0"	11'-0"	11'-8"	5.125	8	3.000	6		J+4.500"	697
<b>3</b>	<40'	5'-0"	6'-0"	6'-8"	5.125	8	3.000	6	Width of Runway Flange Plus 3.25"	J+4.500"	553
	40'-50'	7'-0"	8'-0"	8'-8"	5.125	10	3.000	6		J+5.250"	798
	50'-60'	10'-0"	11'-0"	11'-8"	7.875	10	4.250	6		J+5.250"	930
<b>5</b>	<40'	5'-0"	6'-0"	6'-8"	5.125	10	3.000	6	Width of Runway Flange Plus 3.25"	J+5.250"	641
	40'-50'	7'-0"	8'-0"	8'-8"	7.875	10	4.250	6		J+5.250"	849
	50'-60'	10'-0"	11'-0"	11'-8"	7.875	12	4.250	6		J+5.875"	1428
<b>7.5</b>	<40'	5'-0"	6'-0"	6'-8"	7.875	10	4.250	6	Width of Runway Flange Plus 3.25"	J+5.250"	905
	40'-50'	7'-0"	8'-0"	8'-8"	7.875	12	4.250	6		J+5.875"	1306
	50'-60'	10'-0"	11'-6"	12'-4"	12.438	15	7.500	9		J+6.750"	2732
<b>10</b>	<40'	5'-0"	6'-0"	6'-8"	7.875	12	4.250	6	Width of Runway Flange Plus 3.25"	J+5.875"	993
	40'-50'	7'-0"	8'-0"	8'-8"	7.875	12	4.250	6		J+5.875"	1336
	50'-60'	10'-0"	11'-6"	12'-4"	12.438	15	7.500	9		J+6.750"	2930

\*All dimensions are subject to change without notice